

# Test Report

Test Report No.: QWC20210519-01

**Client** : Suzhou Charter Leader Precision Elections Co.Ltd  
**Add.of Client** : 5 / F, Building 4, Chuangye Building, 625 Binhe Road, High-tech Zone,  
Suzhou City, Jiangsu Province, China  
**Sample Name** : Pcie-miniPcie  
**Description** : No abnormality  
**Model/Type** : Pcie-miniPcie System  
**Date of Receipt** : 2021-05-19  
**Date of Test** : 2021-05-20~2021-05-27  
**Date of Report** : 2021-05-28  
**Test Result** : Pass

Approved by:



Inspected by:

*Sophie Yan*

Reported by:

*Sophie Yan*

# Test Report

Test Report No.:QWC20210525-01

## 1. Sample Information

Sample Name	Sample Type
Pcie-miniPcie	Pcie-miniPcie System

## 2. Test Equipment

Oscilloscope	Tektronix DPO73304SX
Fixture	Intel PCIe CBB fixture
Probe	SMA-SMP Cable*4pcs

## 3. Test DUT

PCIe Board	B
PCIe Filter Board	QiBai(2009) V1.0
MiniPCIe Board	C(19002A-Y135-201017)
HDMI Cable	CHOSEAL
Test Temperature	25+/-2°C

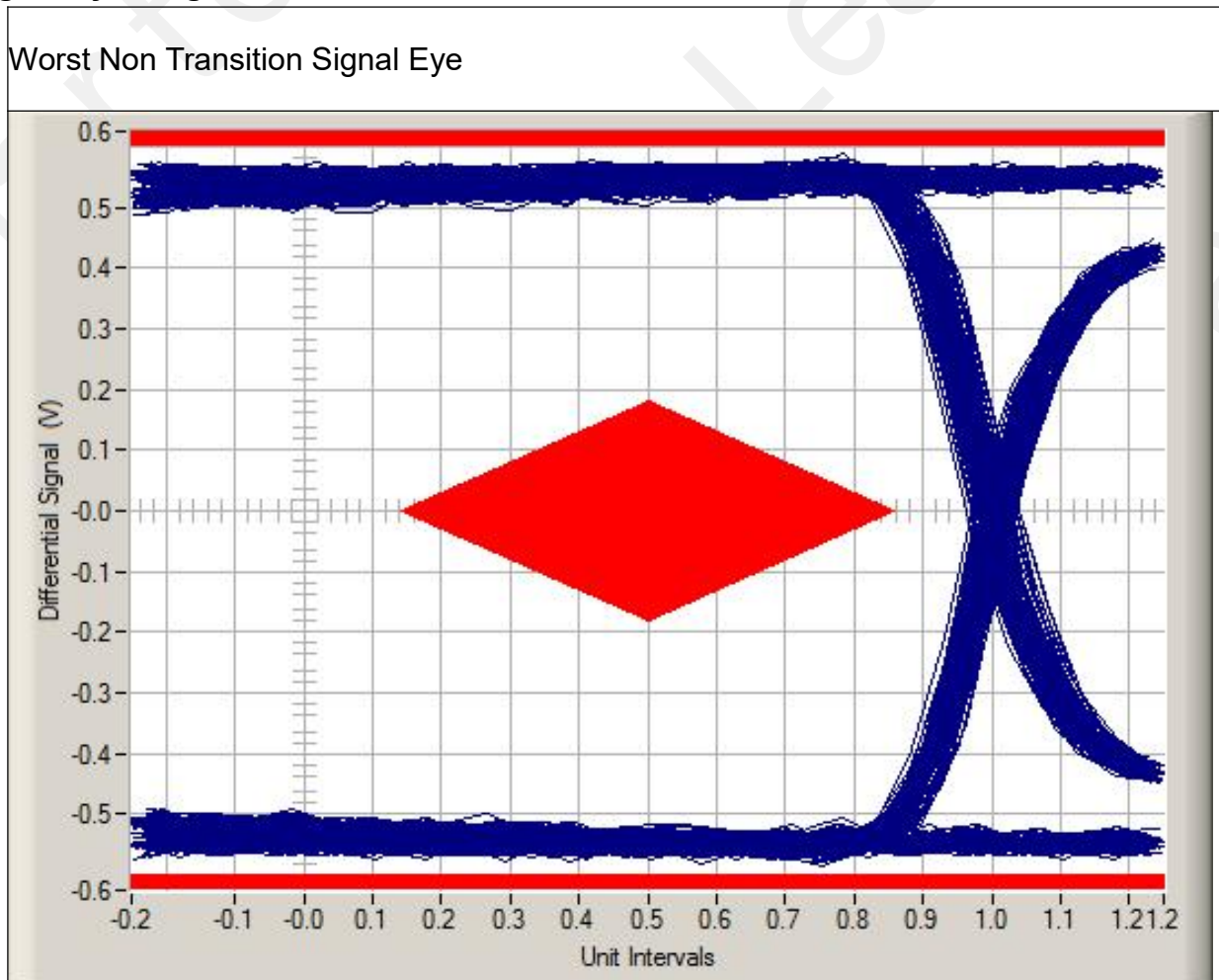
# Test Report

Test Report No.: QWC20210519-01

## 4. Test Results

Electrical Parameter		SPEC	Result	unit
Eyediagram	Worst Non Transition Signal Eye	Fit the template	Pass	N/A
	Worst Transition Signal Eye	Fit the template	Pass	N/A

## 5. Signal Eye Diagram



Company: Shenzhen QWC Standards Technical Services Co.,Ltd

Add: 1/F, Building 3, Lilin Industrial Area, Baihua community Guangming Street, Guangming District., Shenzhen

E-mail: helen@qwctest.com

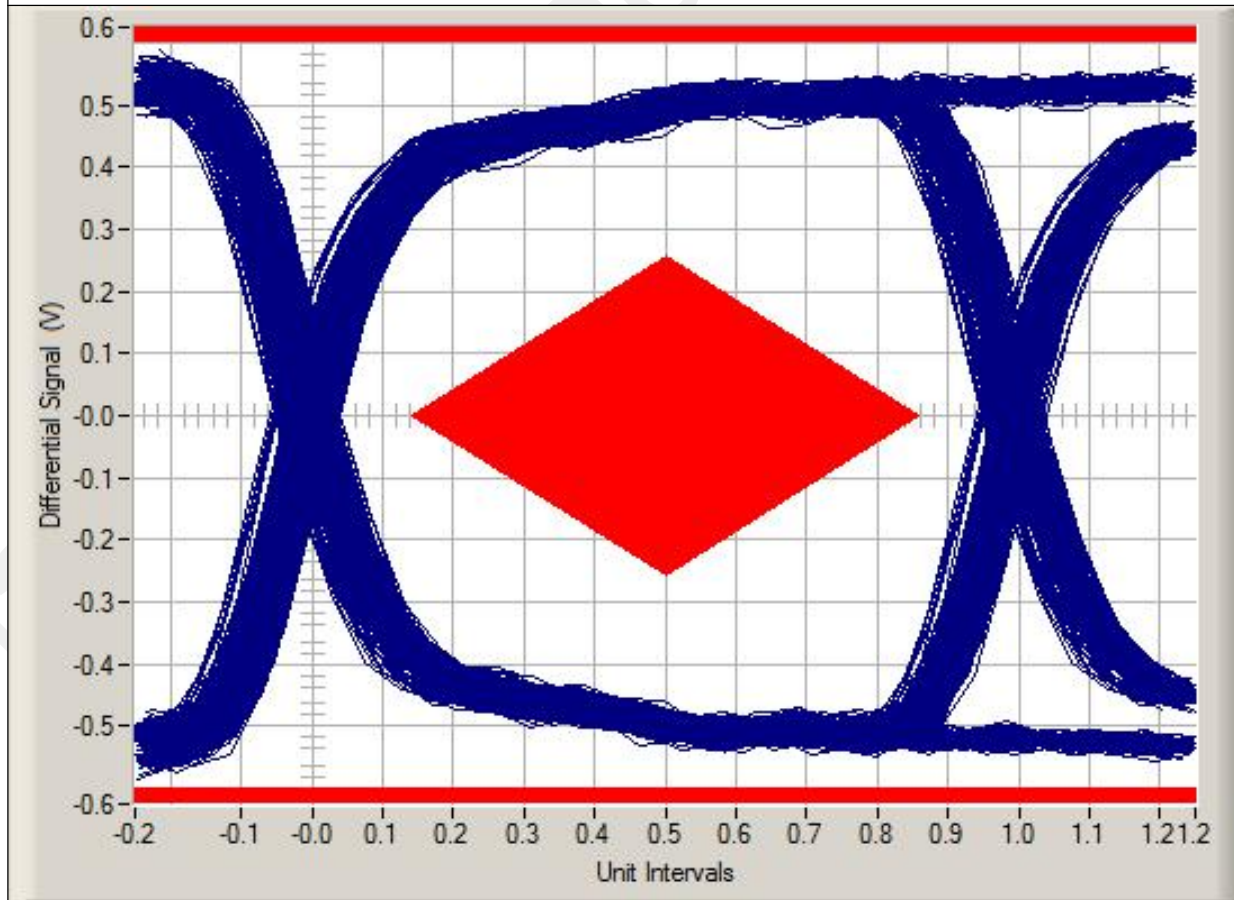
Tel: 0755-27403650

Web: <http://qwctest.com>

# Test Report

Test Report No.: QWC20210519-01

Worst Transition Signal Eye



## 6. Test Pictures

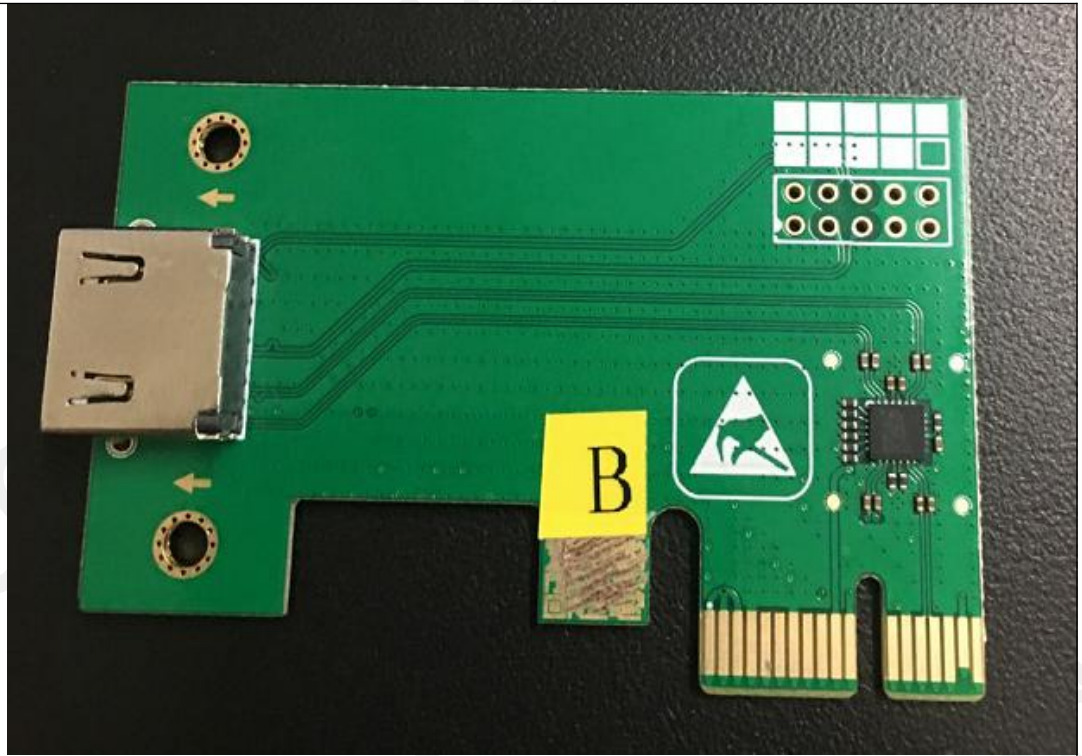
Test Sample



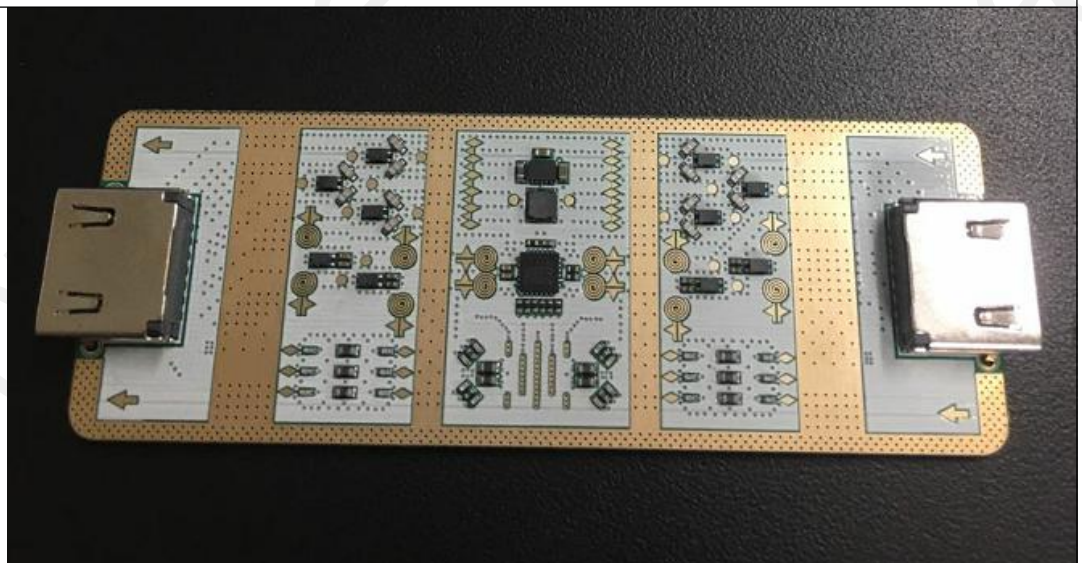
# Test Report

Test Report No.: QWC20210519-01

Pcie Board



Pcie Filter Board



# Test Report

Test Report No.: QWC20210519-01



## 7. Test Data Detail

- Overall Sigtest Result: [Pass!](#)
- Mean Unit Interval (ps): 399.974823  
[Mean Unit Interval Passes Sigtest Limits!](#)
- Max Unit Interval (ps): 399.974823  
[Max Unit Interval Passes Sigtest Limits!](#)
- Min Unit Interval (ps): 399.974823  
[Min Unit Interval Passes Sigtest Limits!](#)
- Min Time Between Crossovers (ps): 378.692702  
[Min Time Between Crossovers Passes Sigtest Limits!](#)
- Data Rate (Gb/s): 2.500157
- Per Edge RMS Jitter (ps): 4.564835
- Mean Median to Peak Jitter: 21.470456 ps  
[Mean Median to Peak Jitter Passes Sigtest Limits!](#)
- Max Median to Peak Jitter: 28.618972 ps  
[Max Median to Peak Jitter Passes Sigtest Limits!](#)
- Min Median to Peak Jitter: 15.874571 ps

Company: Shenzhen QWC Standards Technical Services Co.,Ltd

Add: 1/F, Building 3, Lilin Industrial Area, Baihua community Guangming Street, Guangming District., Shenzhen

E-mail: [helen@qwctest.com](mailto:helen@qwctest.com)

Tel: 0755-27403650

Web: <http://qwctest.com>

# Test Report

Test Report No.: QWC20210519-01

[Min Median to Peak Jitter Passes Sigtest Limits!](#)

- Mean Peak to Peak Jitter: 36.642524 ps  
[Mean Peak to Peak Jitter Passes Sigtest Limits!](#)
- Max Peak to Peak Jitter: 43.331962 ps  
[Max Peak to Peak Jitter Passes Sigtest Limits!](#)
- Minimum eye width: 356.668038 ps
- Min Peak to Peak Jitter: 28.149393 ps  
[Min Peak to Peak Jitter Passes Sigtest Limits!](#)
- Minimum Transition Eye Voltage: -0.5856 volts  
[Minimum Transition Eye Voltage Passes Sigtest Limits!](#)
- Maximum Transition Eye Voltage: 0.588 volts  
[Maximum Transition Eye Voltage Passes Sigtest Limits!](#)
- Minimum Non Transition Eye Voltage: -0.5856 volts  
[Minimum Non Transition Eye Voltage Passes Sigtest Limits!](#)
- Maximum Non Transition Eye Voltage: 0.588 volts  
[Maximum Non Transition Eye Voltage Passes Sigtest Limits!](#)
- Composit Eye Height: 0.912129
- Composit Eye Location: 0.5
- Minimum Transition Eye Voltage Margin Above Eye: 0.196056 volts  
[Minimum Transition Eye Voltage Margin Above Eye Passes Sigtest Limits!](#)
- Minimum Transition Eye Voltage Margin Below Eye: -0.202074 volts  
[Minimum Transition Eye Voltage Margin Below Eye Passes Sigtest Limits!](#)
- Minimum Transition Eye Height: 0.912129 volts
- Minimum Non Transition Eye Voltage Margin Above Eye: 0.321712 volts  
[Minimum Non Transition Eye Voltage Margin Above Eye Passes Sigtest Limits!](#)
- Minimum Non Transition Eye Voltage Margin Below Eye: -0.336381 volts  
[Minimum Non Transition Eye Voltage Margin Below Eye Passes Sigtest Limits!](#)
- Minimum Non Transition Eye Height: 1.018093 volts

# Test Report

Test Report No.: QWC20210519-01

- Nominal Data Rate (bits/sec): 2500000000.0
- Target Unit Interval (s): 4.0e-010
- Minimum Allowed Recovered Unit Interval (s): 3.9988e-010
- Maximum Allowed Recovered Unit Interval (s): 4.0212e-010
- Minimum Time Allowed Between Crossovers (s): 0.0
- Method For Normalizing Jitter: EYE JITTER NORM MEDIAN (0)
- Clock Recovery Method: EYE CLOCK MINIMIZE DEVIATION (2)
- Clock Recovery Window Size (UI): 0
- Jitter Analysis Window Size (UI): 525
- Window Advance (UI): 100
- Minimum Data For Testing (UI): 4000
- Ambiguous UI Resolution Method: EYE AMBIGUOUS NONE (0)
- Median to Peak Jitter Limit (s): 5.65e-011

-----END-----

## Notes:

1. The testing data and result(s) in this report is(are) just for scientific research, education, internal quality control and product development etc.
2. The results relate only to the items tested.
3. The sample and sample information provided by customer.
4. This report shall not be duplicated partially except with the written approval of the our laboratory.
5. The test report is effective only with both signature and specialized stamp.

Company: Shenzhen QWC Standards Technical Services Co.,Ltd

Add: 1/F, Building 3, Lilin Industrial Area, Baihua community Guangming Street, Guangming District., Shenzhen

E-mail: helen@qwctest.com

Tel: 0755-27403650

Web: <http://qwctest.com>